



**Auracast**

Firmware Update

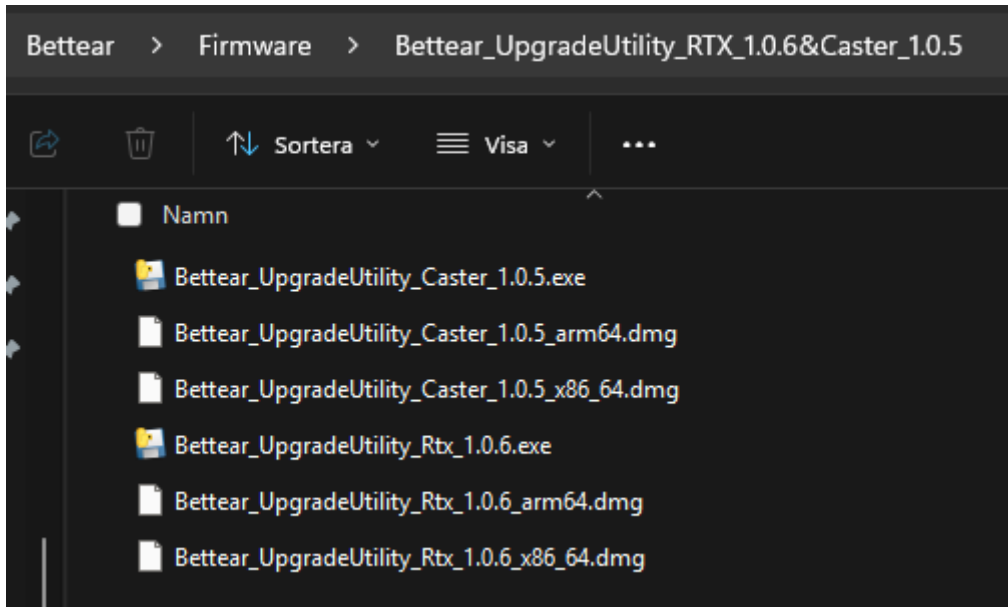
## 1. Contents

2.	B-RTX .....	2
3.	B-CASTER .....	4
4.	B-Smarthive .....	6

## 2. B-RTX

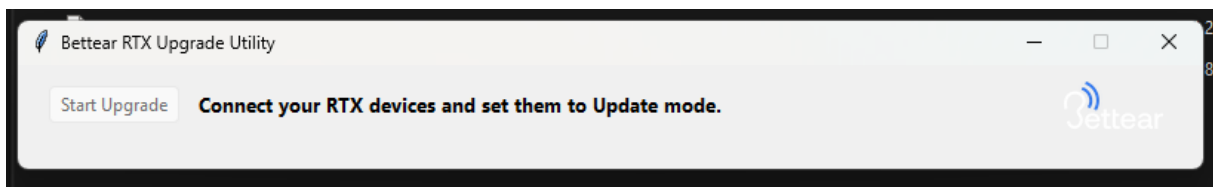
### Locate the Firmware Files

The firmware package includes files compatible with both **Windows** and **MacOS** computers. Identify and select the appropriate file for your operating system before proceeding with the upgrade.



### Launch the Upgrade Utility

Double-click **Bettear\_UpgradeUtility\_Rtx\_1.0.6.exe** (on Windows) or the corresponding MacOS version to open the software.

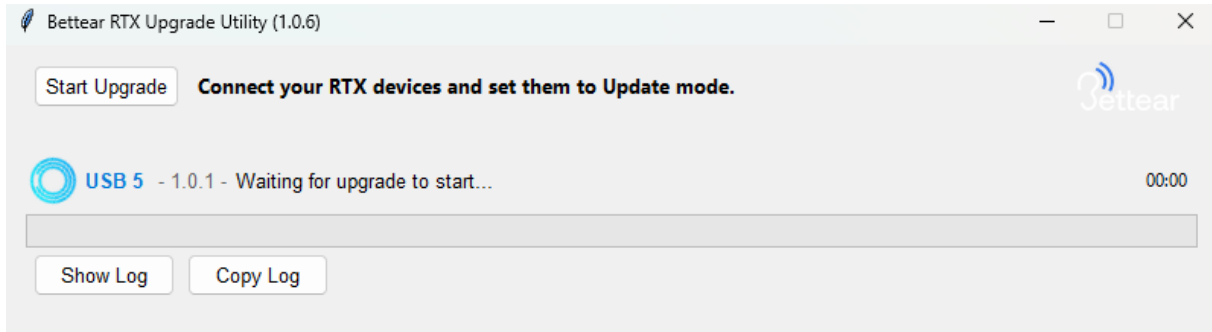


### Connect the Device

Connect the B-RTX device to your computer using a USB cable. Ensure that the device is **turned off (Deep Sleep Mode)** before proceeding.

### Enter Update Mode

To enter **Update Mode**, quickly press the **circular button** on the B-RTX device. The software will detect the device automatically.

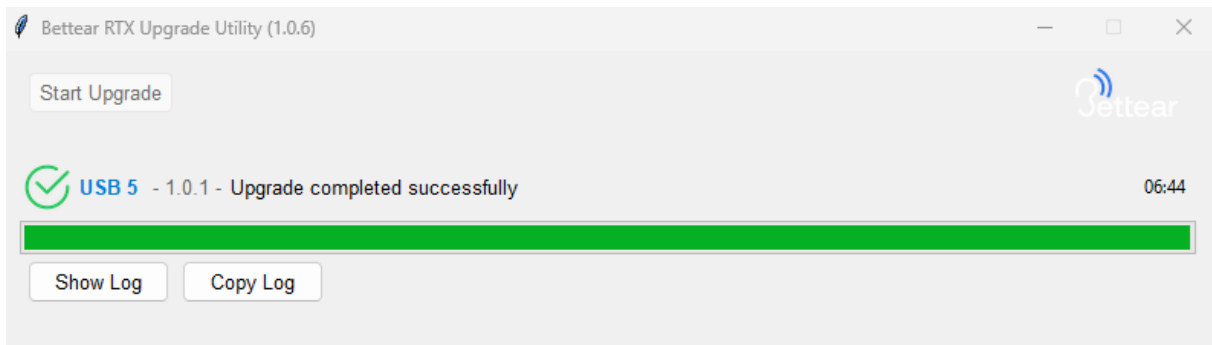


### Start the Upgrade

Once the device has been detected, click the button *Start Upgrade* and wait for the process to complete. Do not disconnect the device or close the software during the upgrade.

### Completion

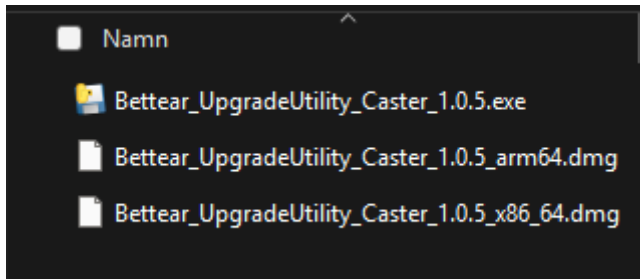
When the upgrade is finished, the software will confirm completion. You may then safely disconnect the device from your computer.



### 3. B-CASTER

#### Locate the Firmware Files

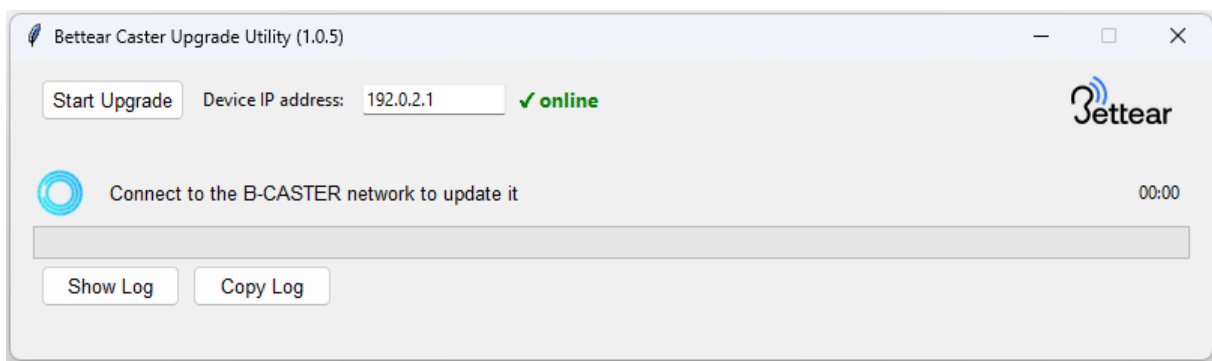
The firmware package includes files compatible with both **Windows** and **MacOS** computers. Identify and select the appropriate file for your operating system before proceeding with the upgrade.



**Note:** Before attempting a firmware update via Ethernet, you must first complete the initial setup, including assigning a static IP as described in the manual, or ensure you know the device's IP address on the network.

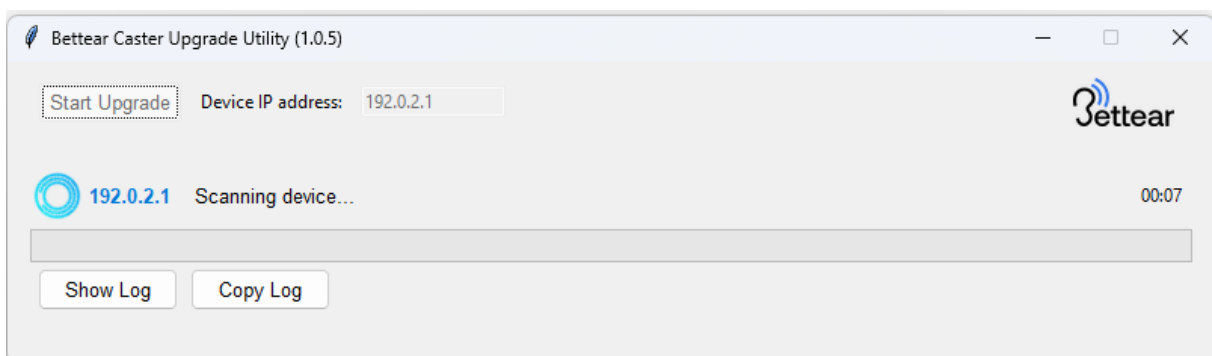
#### Launch the Upgrade Utility

Double-click **Bettar\_UpgradeUtility\_Rtx\_1.0.5.exe** (on Windows) or the corresponding MacOS version to open the software.



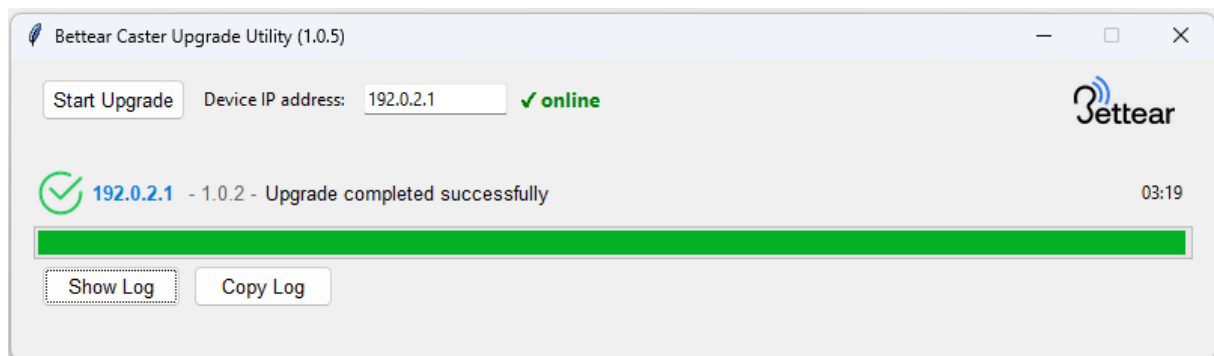
#### Start the Upgrade

Once the device has been recognized, click the button *Start Upgrade*. Then wait until the process is complete. Do not disconnect the device or close the software during the upgrade.



### Completion

When the upgrade has finished, the software will confirm completion. You may then safely disconnect the device from your computer.



## 4. B-SmarHive

### Install Hive Central

Unless already installed, install the Hive Central Software on your computer. Once installation is finished launch the software.

### Upgrading firmware

If you already have a workspace setup, select the B-SmarHive you wish to update, then press the *Upgrade Firmware* button located in the bottom right corner.

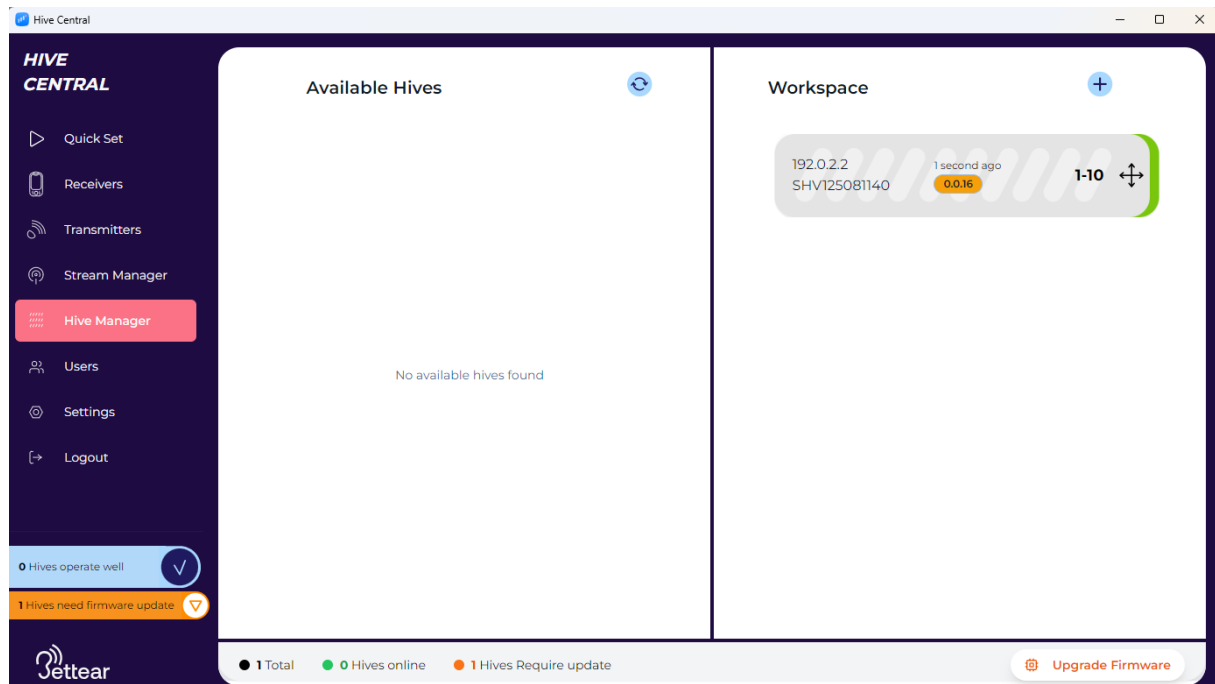
Do not close the software or disconnect the B-SmarHive until the upgrade is completed.

**Note:** Before attempting a firmware update via Ethernet, you must first complete the initial setup, including assigning a static IP as described in the manual, or ensure you know the device's IP address on the network.

### First use

If this is the first time connecting a B-SmarHive and using Hive Central, make sure that your computer is on the same network as the B-SmarHive. If a direct connection is used set your computer's LAN IP to static, 192.0.2.10, then connect a LAN cable from your computer to LAN port 1 on the B-SmarHive.

In Hive Central, select *Hive Manager* from the left-hand menu and click the refresh button in the top right of the left window *Available Hives*. The B-SmarHive will appear. Click and drag the B-SmarHive into the *Workspace* window on the right, then follow the instructions under Upgrade firmware.



You can upgrade the firmware of your B-SmarHive device by selecting *Upgrade Firmware* in the bottom-right corner of the Hive Central application. Follow the on-screen instructions to complete the upgrade process.

## Receivers

In the *Receivers* view, you can see all B-RTX units currently docked in the B-SmartHive. The display shows each unit's battery percentage, serial number, and firmware version.

## Update firmware for B-RTX through Hive Central

Slot ID	Battery	Status	Serial No.	License	Firmware	Stream	D.Language
9	100%	online	RTX125031911	Full	1.0.6		English
10	45%	upgrading	RTX125031831	Full	1.0.6		English

**Upgrade Summary:**  
Total: 1 Upgrading: 1 Failed: 0 Pending: 0

**Messages:**  
Device 10 upgrading

**Filter Devices:**  
Device filters: Slot ID (Select), Battery (0% to 100%), Status (online), Serial No. (Select), License (Select), Firmware (Select).  
Content filters: Stream (Select), Device Language (Select).

**Configure Devices:**  
Stream: <required>, Device Language: English, Blink: [X], Apply: [X].

**Status Bar:** 2 Available, 1 Selected, 1 Low battery

To upgrade the firmware for multiple B-RTX units, please locate the bottom menu in Receivers view. You will find options to upgrade the firmware for either selected B-RTX units or all docked units.

Slot ID	Battery	Status	Serial No.	License	Firmware	Stream	D.Language
5	14%	upgrading (58%)	RTX125031649	Full	1.0.6		English
9	100%	pending	RTX125031911	Full	1.0.6		English
10	90%	pending	RTX125031831	Full	1.0.9		English

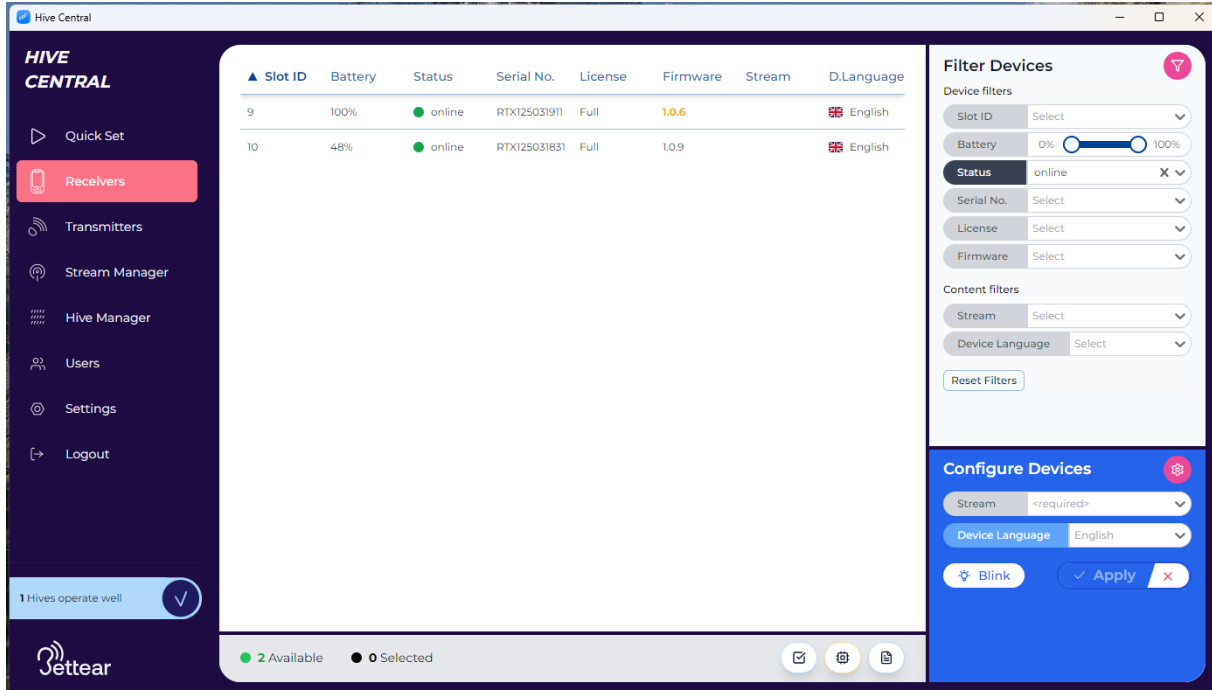
**Bottom Menu:** Filter, Configure

**Status Bar:** 3 Available, 3 Selected, 1 Low battery



Please note that the updates are performed sequentially, not in parallel — each B-RTX unit will be upgraded separately, one at a time.

Once upgrade is complete the software will automatically update the firmware version of the B-RTX device to the latest.



**HIVE CENTRAL**

Quick Set

**Receivers**

Transmitters

Stream Manager

Hive Manager

Users

Settings

Logout

1 Hives operate well

**Receivers Table:**

Slot ID	Battery	Status	Serial No.	License	Firmware	Stream	D.Language
9	100%	online	RTX125031911	Full	1.0.6		English
10	48%	online	RTX125031831	Full	1.0.9		English

**Filter Devices**

Device filters

Slot ID: Select

Battery: 0% to 100%

Status: online

Serial No.: Select

License: Select

Firmware: Select

Content filters

Stream: Select

Device Language: Select

Reset Filters

**Configure Devices**

Stream: <required>

Device Language: English

Blink Apply

2 Available 0 Selected